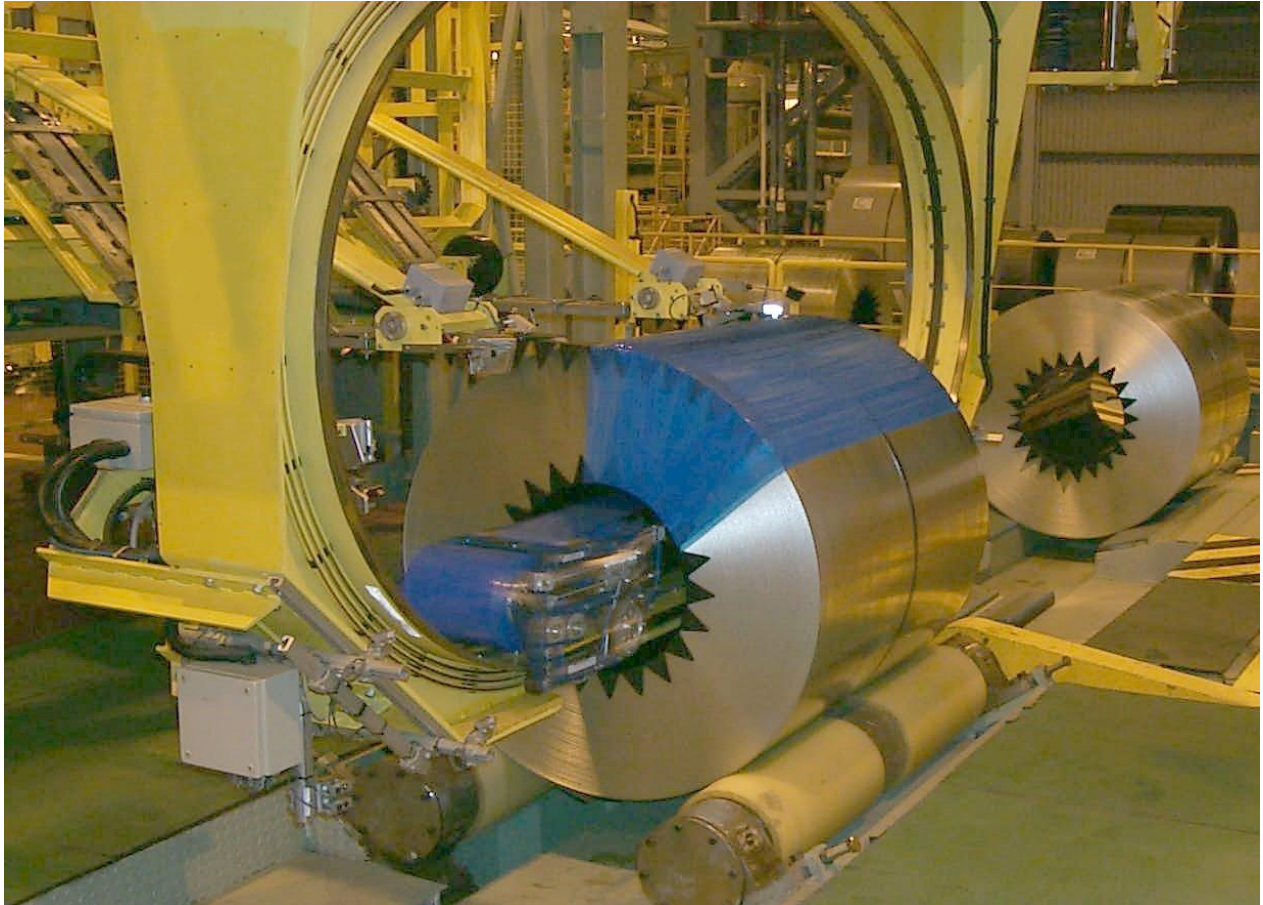
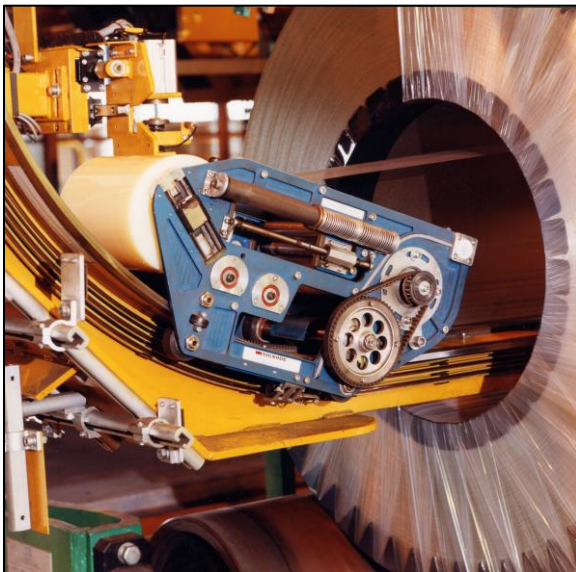


COILMASTER® MK 2 COIL STRETCHWRAPPER



Designed for high performance through-the-eye wrapping of coils for the metals industry, the Coilmaster MK2 is available in a number of versions to suit most customers wrapping needs. The high speed carriage and the coil rotation in the machine determine the wrapping efficiency and coil protection levels. Shown here is the main film shuttle unit applying the outer film wrap over the automatically applied coil OD plastic heavy-duty edge-protection.



The powered film shuttle can apply a range of corrosion inhibiting films to the coil as well as protective films, strength films and also paper wrapping if needed. Depending on the options selected the machine is also able to apply coil outer edge plastic edge-protection and also plastic inner bore protection fully automatically during the wrapping process. A highly flexible packaging systems solution from Signode.

COILMASTER® MK 2 COIL STRETCHWRAPPER

The Signode Coilmaster MK2 has been designed as a modular unit to be integrated into customers existing or new end-of-line coil packaging systems and is designed to take into account the metal and non-ferrous steel industries current and future needs for product protection and wrapping needs and for:

- High production throughputs - in continuous production for sheet coil wrapping operations
- Maximum machine up-time - with Signode's range of heavy duty protective wrapping and VCI films
- Flexibility with option modules - creates a system to suit most customers plant layouts and needs
- Improved package protection - coils can easily be packaged, handled stored and shipped after wrapping
- Lower cost of ownership - easy service & low maintenance of the unit and film shuttle required

For coil wrapping integrated blocker rollers rotate the coil, the speed of rotation, film carriage speed and the film width used determine the level of the film usage and overlap to produce a fully cocoon wrapped coil, where most of the air has been eliminated from the coil educing the possibility of corrosion or water spots.

Coilmaster Options

- Machine indexing on an overhead gantry to suit most customer coil line layouts
- Automatic Coil outer edge protection applicators
- Twin shuttle option to apply two film types simultaneously
- Automatic film shuttle exchange unit
- Label applicator magazine and printer systems integration
- Outer Coil Bodywrap Applicator
- Additional Coil Scan system to measure coils and track obstructions
- Machine Safety Guarding Package
- Other PLC Control systems

Machine Technical Specifications

- Coil Diameter 700 mm – 2.500 mm
- Coil Width 3.1 ratio to coil diameter
- Coil Bore 508 mm min for shuttle
- Shuttle speed Variable up to 3,8 m/s
- Shuttle drive Electrical rack & pinion
- Film Width 250 mm
- Film roll dia. 240 mm max.
- Film roll length 760 m with 50 µm film
- Controller Siemens S7-300
- El. Connection 400V 3Ph 50Hz
- Control Voltage 24 V DC
- Consumption up to 15 kVA
100 NI/cycle
- Machine weight 10.000 kg approx.



The Coilmaster Mark 2 can be equipped with automatic coil edge-protection applicators. The basic unit is composed of the jumbo coils of edge-protection on dispensers for each coil edge and applicator arms to find and feed the edge-protection onto the coil, during the film wrapping cycle.