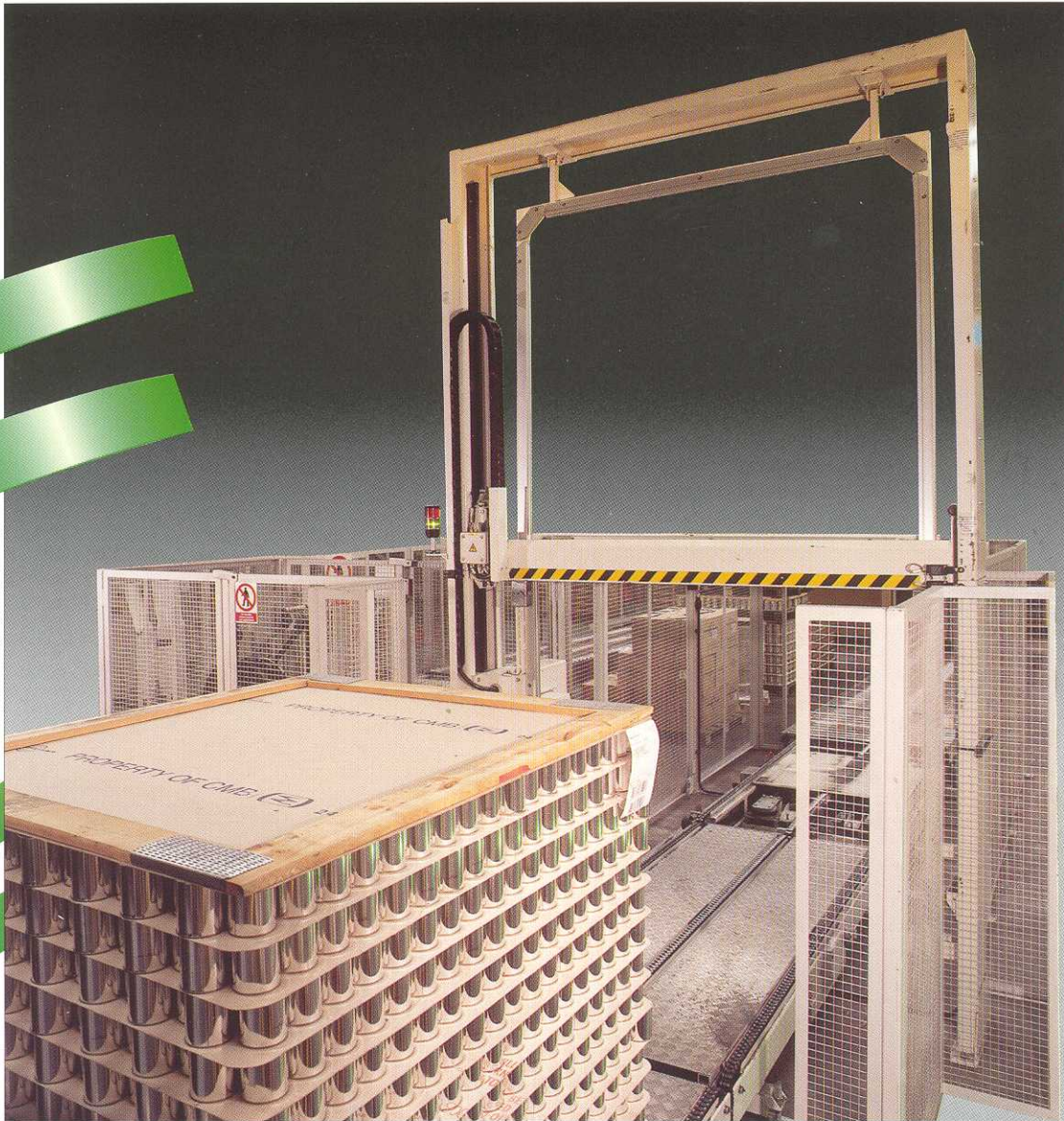


SIGNODE BCU-MD200 Unitising Station

Reliable, high volume Can and Bottle palletising



System Advantages

Ultra reliable – incorporates the latest Signode MD-200 strapping head combined with proven Signode technology for ultra-reliable performance and longer production cycles.

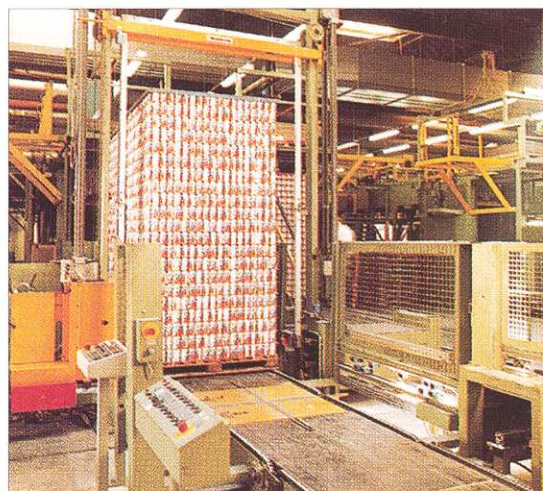
Automatic monitoring – accurate analysis of machine usage, performance and applied strap tension through automatic monitoring systems.

Accommodates all pallet heights – short strap chute flaps based on a new design enable pallets to be strapped at any height reducing cycle times and increasing productivity.

Enhanced performance – the new aluminium chute profile provides a 'sure feed' facility during initial strapping cycle

Easily adjustable compression – using 10-step control switch.

Accurate bayonet operation – with a smoother, quieter drive and docking design.



 **SIGNODE**[®]

A U T O M A T I C
M A C H I N E S

SIGNODE BCU-MD200

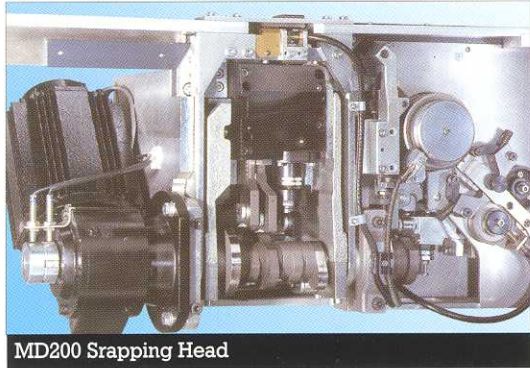
Incorporating new strapping head technology for increased efficiency

The BCU-MD200 is designed for high volume continuous production Can and Bottle unitising installations where reliability and machine availability is vital.

By further development of the proven design of its previous generation strapping stations, combined with the advanced technology of the MD200 strapping head, Signode have developed a unitiser that provides unequalled levels of performance both in terms of productivity and reliability.

Additionally, maintenance requirements are extremely low; the cam driven MD200 head having fewer wear parts, delivers machine availability levels unparalleled in the industry.

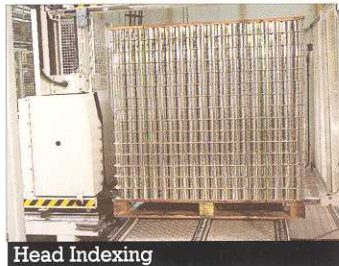
And with an extremely wide range of new features and options, the BCU-MD200 can be tailored to suit specific customer performance requirements.



MD200 Strapping Head

The MD200 strapping head is a technological breakthrough by Signode. This clutch free multi-motor, cam shaft design provides exceptional repeat high tension accuracy from 100-2000N ($\pm 3\%$), together with extremely high strap joint strength and zero overlap. With very few wear parts within the head, MD200 is designed to provide long operational life, plus significantly higher levels of reliability when compared with competitive products.

The MD200 provides a winning combination of ultra low maintenance requirements with exceptional reliability in a compact, technologically brilliant package.



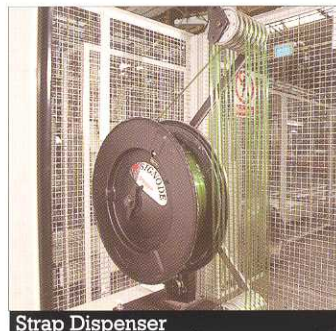
Head Indexing

The MD200 strapping head indexes out to the side of the pallet to provide maximum strapping performance and efficiency.



Head and Machine Cycle Counters (optional)

All MD200 heads are fitted with independent cycle counter to allow accurate analysis of head usage to facilitate planned maintenance. Cycle counters to measure overall machine usage can be fitted as an option.



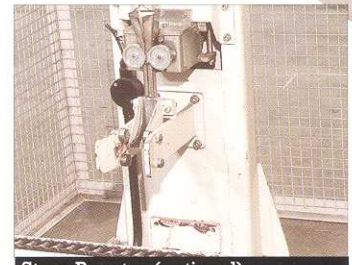
Strap Dispenser

The new mounting design facilitates fast coil loading and improved strap feeding.



Dispenser Status Signal (optional)

Provides a warning to operators that the strapping dispenser requires recharging, to minimise downtime and maintain throughput efficiency.



Strap Booster (optional)

An electrically driven system designed to improve strap feed accuracy.

Text Display and Printer (optional)

Provides information together with report printout on machine and head performance, including applied tension of individual straps.



Short Strap Chute Flaps

This new, hard-wearing carbon fibre design allows pallets to be strapped at any height reducing cycle times and increasing pack throughput efficiency.

Aluminium Chute Profile

A new design which provides surer feeding of strap during the first stage feeding operation, reducing the possibility of strap misfeeds and the associated downtime.

Head Cradle

This new design facilitates head removal for scheduled maintenance requirements.



Strap on Pack Display (optional)

Identifies that the strapping cycle has been successfully completed.

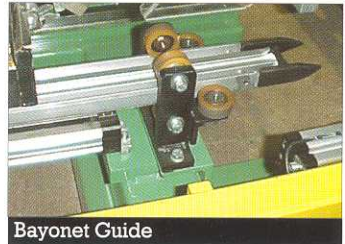
Split Bayonets (optional)

Where space is at a premium the bayonet can be split in two separate halves and driven into position from both sides of the machine.



Strap Weld

Signode's patented 'SWINGWELD' vibration seal technology provides consistently high joint strength without heat, fumes or smoke. Additionally the MD200 produces a completely flush joint with zero strap overlap.



Bayonet Guide

A new drive and docking design provides smooth and accurate bayonet movement through the pallet void to the opposite chute corner.



Machine Status Warning System

High level coded lights alert personnel to machine status during operation. This feature is particularly useful where operators are located on palletiser top decks.

Compression Control

The amount of compression applied to the pack can be adjusted easily by a 10 step control switch located in the operator's console (500 to 5000N).

Additionally, a wide compression platen is available to spread the compression force more equally across the pack surface.

The machine can also work without compression.



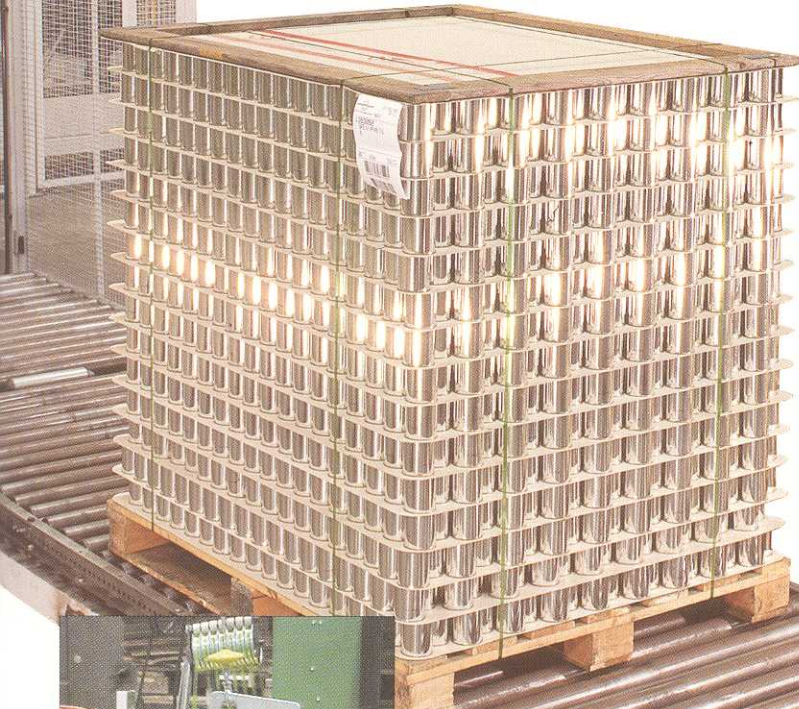
Operator Control Console

Although the BCU-MD200 is designed to operate automatically, a separate control console is provided and is equipped with illuminated switches and visual signals which continually monitor the machine operation and allow manual intervention when necessary.



Lifting Crane (optional)

Designed to ease the lifting of both strapping coils and strapping head.



SIGNODE BCU-MD200 UNITISING STATION

Cost effective solutions for Can and Bottle packaging

EQUIPMENT SPECIFICATION

Overall Machine Dimensions

Height	3900 mm (260 mm conveyor heights)
Width	4500 mm (including bayonet platform)
Optional	Underframe for other conveyor heights

Pack Dimensions

Height	3000 mm (max) 1100 mm (min)
Width	1500 mm (max) 1000 mm (min)

Compression

Width	300 mm
No Compression or Force	500-5000 N adjustable in 10 steps
Nominal Speed	85 mm/sec
Compression Speed	21 mm/sec

Controller

Standard	Siemens S7224
Optional	Siemens S5 or Allen Bradley

Head Stroke	450 mm
Bayonet Stroke	1800 mm

POWER REQUIREMENTS

Electrical

Main supply	3 kVA, 400 V, 3 phase (N&E), 50Hz
Control Voltage	24 V DC
Starting Current Time	16A max. for 1 sec (16A fusing required)

Air

Bayonet and strapping head carriage	6 bar R $\frac{3}{4}$ or $\frac{1}{2}$, 5 bar min
-------------------------------------	--

Standard Paint Finish

Frame	RAL 6000 patina green
Electric Motors	RAL 7021 dark grey
Operators Console	RAL 7032 pebble grey
Moveable Parts	RAL 1012 yellow

After Sales Service

Even the most reliable equipment requires planned maintenance, which is why, as part of the Signode system customers are able to arrange scheduled contract maintenance from Signode's service team.

CONSUMABLES & ANCILLARY EQUIPMENT

Strapping

For the very best performance Signode recommend the use of it's own engineered polyester strapping – Tenax®. Available in a variety of widths and gauges, Signode's Can and Bottle packaging specialists will be able to discuss the best specifications for your particular application.



Off-line Packaging



In addition to the BCU-MD200, Signode provides a comprehensive range of own design hand tools and strap dispensing equipment to handle all off-line packaging requirements.

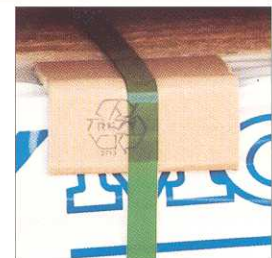


Stretch Film



For many customers, a strap and wrap solution is now required for their products. Signode is able to offer this 'one-stop' shop facility with it's own range of fully automatic and semi-automatic stretch wrapping machines combined with the supply of high performance stretch film material.

Other Signode Products



With over 80 years of experience of providing packaging solutions for industry, Signode can offer a range of products for use in the Can and Bottle industries such as steel strapping and application equipment, airbags and pack corner protection.

SIGNODE®

An ITW Company
© Signode 2000

F279 E 8/00
Printed in the U.K.



Signode has a policy of continuous product development and reserves the right to alter specifications at any time without prior notice.